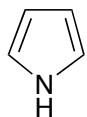


7. (10 pts) Draw all the possible conjugate acids of pyrrole, circle the one actually formed, and explain your reasoning.



pyrrole

8. (7 pts) Nitric acid is used to oxidize sugars. For aldoses, not only is the aldehyde oxidized but also the lone primary alcohol at the end of the chain. Draw Fischer Projections of two different aldohexoses, both of which will yield meso dicarboxylic acids upon treatment with nitric acid.