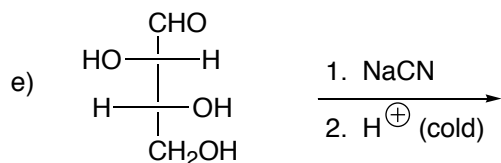
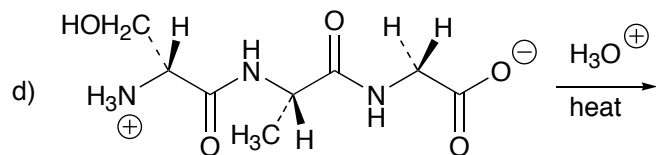
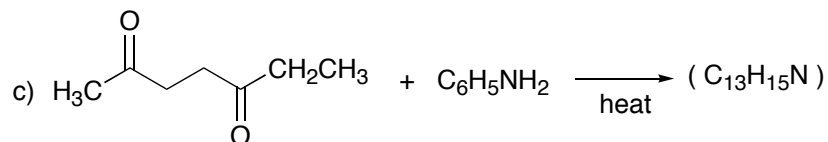
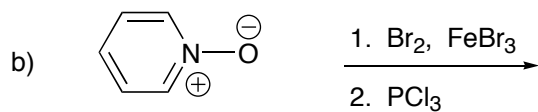
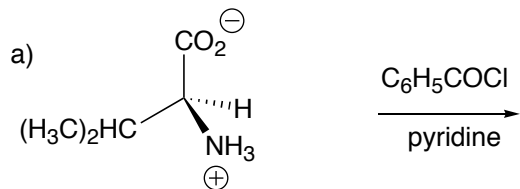


Name _____

CHE 311
Sp 2008
Exam 4
Ch 22, 23

1. (25 pts) Complete the following reactions, clearly indicating stereochemistry where appropriate. If a mixture of diastereomers is formed, draw all the products. If a mixture of enantiomers is formed, draw one enantiomer only, and add the phrase " + enantiomer ".



2. (5 pts). Draw a Haworth Projection of α -D-Mannose. Mannose is epimeric with D-glucose at C-2.